

Steel fireplace MBM right 10 kW Ø 200 Lift-up Bent glass

MBM/P/BS/G/SG EAN: 5901350031421

BGN 6489

Exceptional care to every detail, excellent technical parameters, precision this are the characteristics of this line of fireplaces.



TECHNICAL DATA

► General

| | |
|--|--|
| Rated output (kW) | 10 |
| Heating power range (kW) | 4.5 - 12.5 |
| Heating efficiency (%) | 81 |
| Exhaust gas temperature (°C) | 235 |
| Material | steel |
| Fuel type | seasoned hardwood (moisture ≤20%) |
| Max length of logs (cm) | 50 |
| Min outlet grids active field (cm ²) | ≥700 |
| Min inlet grids active field (cm ²) | ≥500 |
| Glazing type | corner |

► Efektywność Energetyczna

| | |
|---------------------------------------|---------------|
| Energy class | A |
| Energy efficiency index (EEI) | 106.71 |
| CO emissions (at 13% O ₂) | 0.1 |

► Physical parameters

| | |
|------------------------------|--------------|
| Weight (kg) | 244 |
| Width (cm) | 83.7 |
| Height (cm) | 126.9 |
| Depth (cm) | 54.6 |
| Exhaust outlet diameter (mm) | 200 |

► Certyfikaty/Zgodność

Certifications / Compliance

Compliance with BIMSCHV 2, Designed for recuperation, KRATKI PRO, Meets the criteria of eco -project

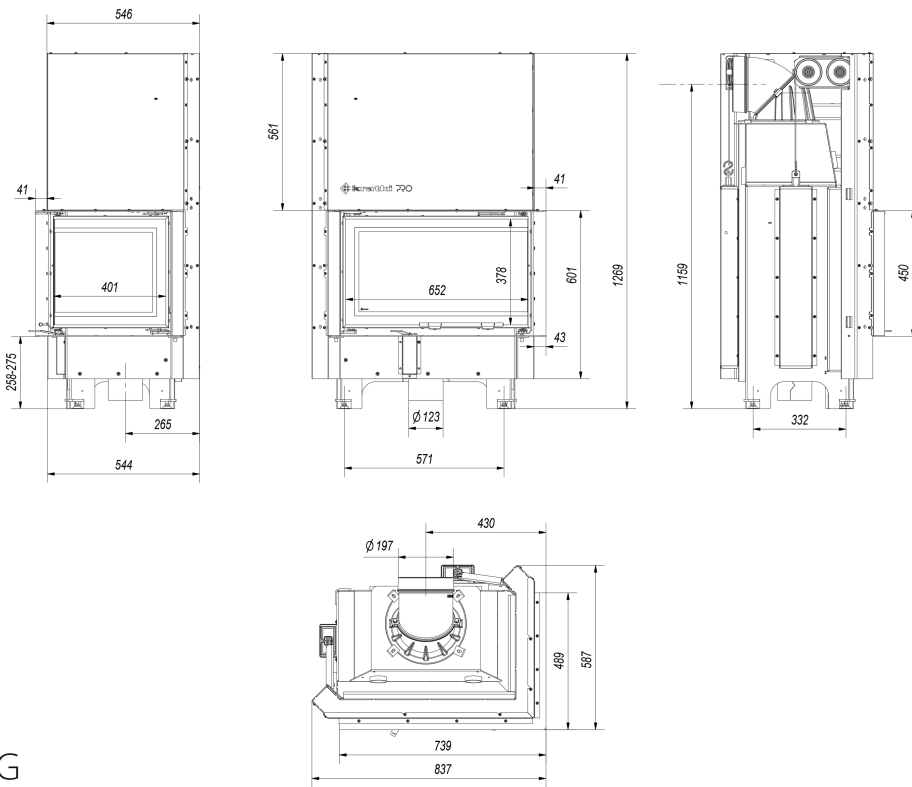
2) ≤ given in %

| | |
|--|-----------|
| Dust emission (mg/Nm ³) | 28 |
|--|-----------|

▶ Equipment

Equipment

**Air intake, Decorative
glass glass, Loading the
combustion chamber**



MBM/P/BS/G/SG